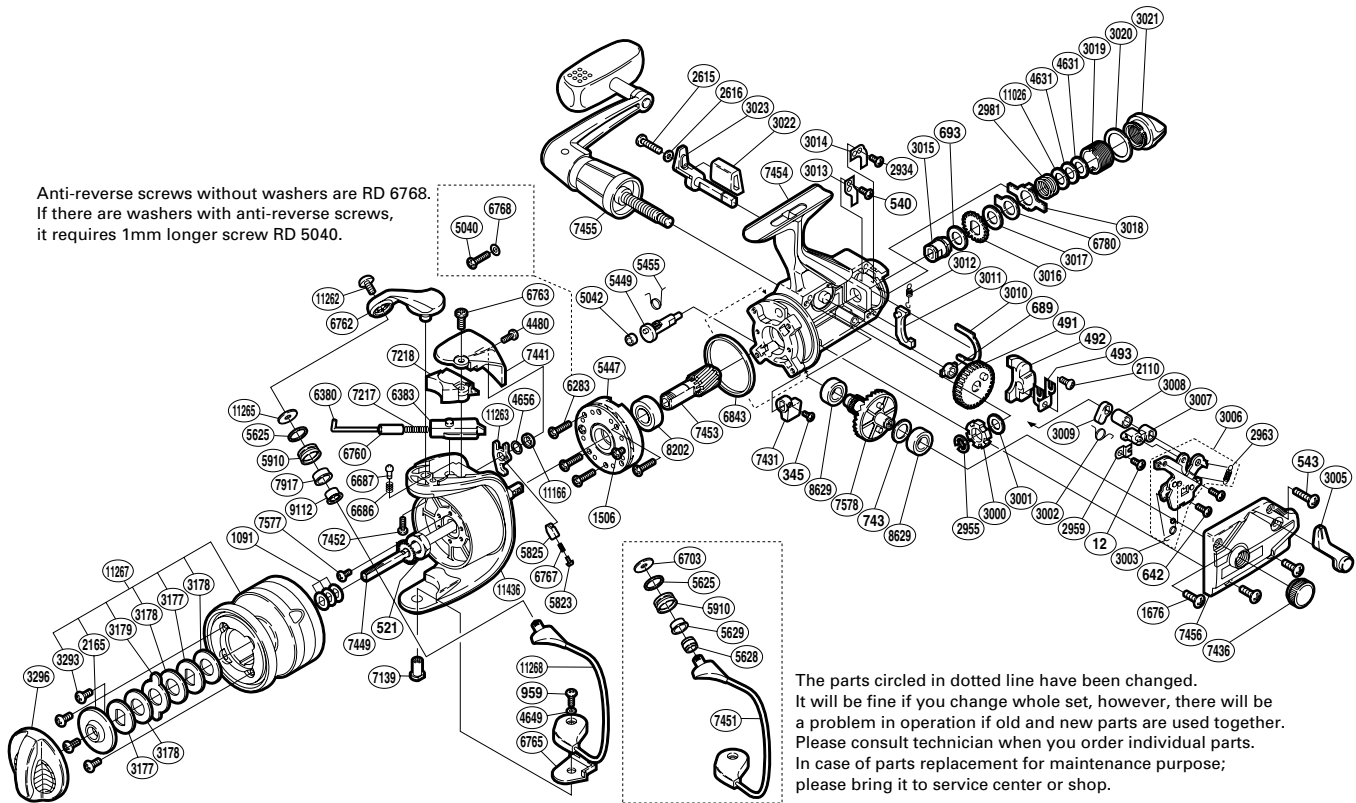


SHIMANO

BAITRUNNER A-RB

BTR-4500B



Anti-reverse screws without washers are RD 6768.
If there are washers with anti-reverse screws,
it requires 1mm longer screw RD 5040.

The parts circled in dotted line have been changed.
It will be fine if you change whole set, however, there will be
a problem in operation if old and new parts are used together.
Please consult technician when you order individual parts.
In case of parts replacement for maintenance purpose;
please bring it to service center or shop.

(1SD994502U)

Part No.	Description	Part No.	Description	Part No.	Description
RD 0012	Shaft Retainer Screw	RD 3012	BaitRunner Pawl Spring	RD 6765	Bail Hold Support Spacer
RD 0345	Anti-Reverse Lever Screw	RD 3014	Dial Click	RD 6767	Bail Trip Lever Spring
RD 0491	Oscillating Gear	RD 3013	BaitRunner Pawl Guide	RD 6780	Single Eared Washer
RD 0492	Oscillating Slider	RD 3015	Free Spool Tension Shaft	RD 6843	Friction Ring
RD 0493	Oscillating Slider Retainer	RD 3016	Click Gear	RD 7139	Bail Hold Support Shaft
RD 0521	Rotor Nut	RD 3017	Free Spool Tension Washer (B)	RD 7217	Bail Spring
RD 0540	Pawl Guide Screw	RD 3018	Eared Washer "BFS"	RD 7218	Bail Spring Cover
RD 0543	Side Cover Screw (B)	RD 3019	Free Spool Tension Screw	RD 7431	Anti-Reverse Lever
RD 0642	Clutch Plate Screw	RD 3020	Dial Spacer	RD 7436	Handle Screw Cap
RD 0689	Oscillating Gear Bushing	RD 3021	BaitRunner Tension Dial	RD 7441	Bail Spring Cover Guard
RD 0693	Free Spool Tension Washer (A)	RD 3022	BaitRunner Lever Bridge	RD 7449	Main Shaft
RD 0743	Drive Gear Washer	RD 3023	BaitRunner Lever Arm (R)	RD 7452	Bail Arm Screw
RD 0959	Bail Hold Support Screw	RD 3177	Key Washer	RD 7453	Pinion Gear
RD 1091	Spool Washer	RD 3178	Drag Washer	RD 7454	Body Assembly
RD 1506	Clutch Cover Screw	RD 3179	Eared Washer	RD 7455	Handle Assembly
RD 1676	Side Cover Screw (A)	RD 3293	Seal Plate Screw	RD 7456	Side Cover
RD 2110	Slider Retainer Screw	RD 3296	Drag Knob	RD 7577	Nut Lock Screw
RD 2165	Seal Plate	RD 4480	Bail Spring Cover Screw (B)	RD 7578	Drive Gear
RD 2615	BaitRunner Lever Screw	RD 4631	Tension Spring Washer "B"	RD 7917	Line Roller Bushing
RD 2616	Lock Washer	RD 4649	Spacer	RD 8202	Bail Bearing
RD 2934	Dial Click Screw	RD 4656	Bail Trip Lever Washer	RD 8629	Bail Bearing
RD 2955	"C" Lock	RD 5042	Anti-Reverse Cam Ring	RD 9112	Line Roller Collar
RD 2959	Lever Shaft Retainer	RD 5447	Roller Clutch Assembly	RD1166	Spacer
RD 2963	BaitRunner Click Spring	RD 5449	Anti-Reverse Cam	RD11262	Line Roller Screw
RD 2981	Free Spool Tension Spring	RD 5455	Anti-Reverse Cam Spring	RD11263	Bail Trip Lever
RD 2999	Drive Gear Spacer	RD 5625	Line Roller Spacer	RD11265	Line Roller Washer
RD 3000	BaitRunner Ratchet	RD 5823	Lever Spring Guide (A)	RD11267	Spool Assembly
RD 3001	Ratchet Spacer	RD 5825	Lever Spring Guide (B)	RD11268	Bail Assembly
RD 3002	Clutch Spring	RD 5910	Line Roller	RD11436	Rotor
RD 3003	Clutch Pawl Spring	RD 6283	Roller Clutch Screw		
RD 3005	BaitRunner Lever Arm (L)	RD 6380	Bail Spring Guide (A)		
RD 3006	Clutch Plate Assembly	RD 6383	Bail Spring Guide (B)	RD 5040	Roller Clutch Screw (before change)
RD 3007	Clutch Arm	RD 6686	Bail Arm Click Spring	RD 5628	Line Roller Collar (before change)
RD 3008	Clutch Cam Spacer	RD 6687	Bail Arm Click	RD 5629	Line Roller Bushing (before change)
RD 3009	Clutch Cam	RD 6760	Bail Spring Guide (A) Collar	RD 6703	Line Roller Washer (before change)
RD 3010	Dial Retainer	RD 6762	Bail Arm	RD 6768	Roller Clutch Screw Washer (before change)
RD 3011	BaitRunner Pawl	RD 6763	Bail Spring Cover Screw (A)	RD 7451	Bail Assembly (before change)

(190315)